

A4000

Four leaf Foldaway
Counterweight
Balanced Doors

FEATURES

MINIMAL INTERNAL
PROJECTION

HIGH SECURITY

HIGH TRAFFIC
AREAS

CUSTOM BUILT
FOR ALL
STRUCTURAL
REQUIREMENTS
AND
ARCHITECTURAL
DESIGNS

CLADDING
VERSATILITY

MINIMAL
MAINTENANCE
REQUIREMENTS



A4000 – Four-leaf Foldaway Counterweight Balanced Door

The A4000 four-leaf Foldaway Counterweight Balanced Door is custom made and designed for all applications where security and superior appearance is required. It is more suitable for very high openings and internal obstructions may prevent the operation of the door. Apart from achieving the lowest maintenance with the highest operation cycles, the A4000 only requires minimum internal projection around 1/8 of full opening height. It is able to be designed in a variety of cladding and glazing types.

The A4000 is commonly used in the industrial, commercial markets offering lowest internal projection requirement. Typical application is workshop, or warehouse with high opening height (6-10mtrs).

The A4000 is motorised. It is equipped with ramp up ramp down motor which provides quiet and smooth operation.

All ARCO (QLD)'s counterweight doors are designed to withstand site specific wind loading in accordance to AS 1170.2 – 2000 ranging from 0.5KPa to cyclonic condition. Without specification, the standard industry 0.5KPa is used to design the door.

ARCO (QLD) has a continuous program of product development and reserves the right to change applications as any time without notice

ARCO (QLD) Pty.Ltd. ABN 27 108 275 896

s34 Christensen Road South, Stapylton, QLD 4207 | Tel: 61-7 3807 5364 | Fax: 61-7 3382 7929

Web: www.arqoql.com.au

Features and Benefits

Recommended Specification

The A4000 is custom built for each specific application. Please contact ARCO (Qld) for any technical assistance in design and installation. Listed below are some of the main design considerations when specifying the A4000:

- Operational Requirements.
- Opening Dimensions.
- Structural Requirements.
- Architectural Requirements.

Therefore it is important to accurately measure the opening dimensions and adequately specify any requirements.

Opening Requirements

The A4000 Foldaway Counterweight Balanced Door requires operational clearances as well as permanent space for its accommodation. These dimensions vary depending on the application. It is important to take these in to consideration especially the operational clearances as they impinge on other design criteria, for example the drive through clearances.

Motorisation

Motorisation requires the addition of:

- Motorisation Guides.

- Variable Drive Unit with Manual Release.
- Independent Limit Switches.
- Overhead Shaft.
- Control System.

When a motorised door is ordered the above mentioned items are included as they are all integral components of the door.

Locking

Locking for motorised doors is usually locked via the motor however additional security is available, for example electric or magnetic locks.

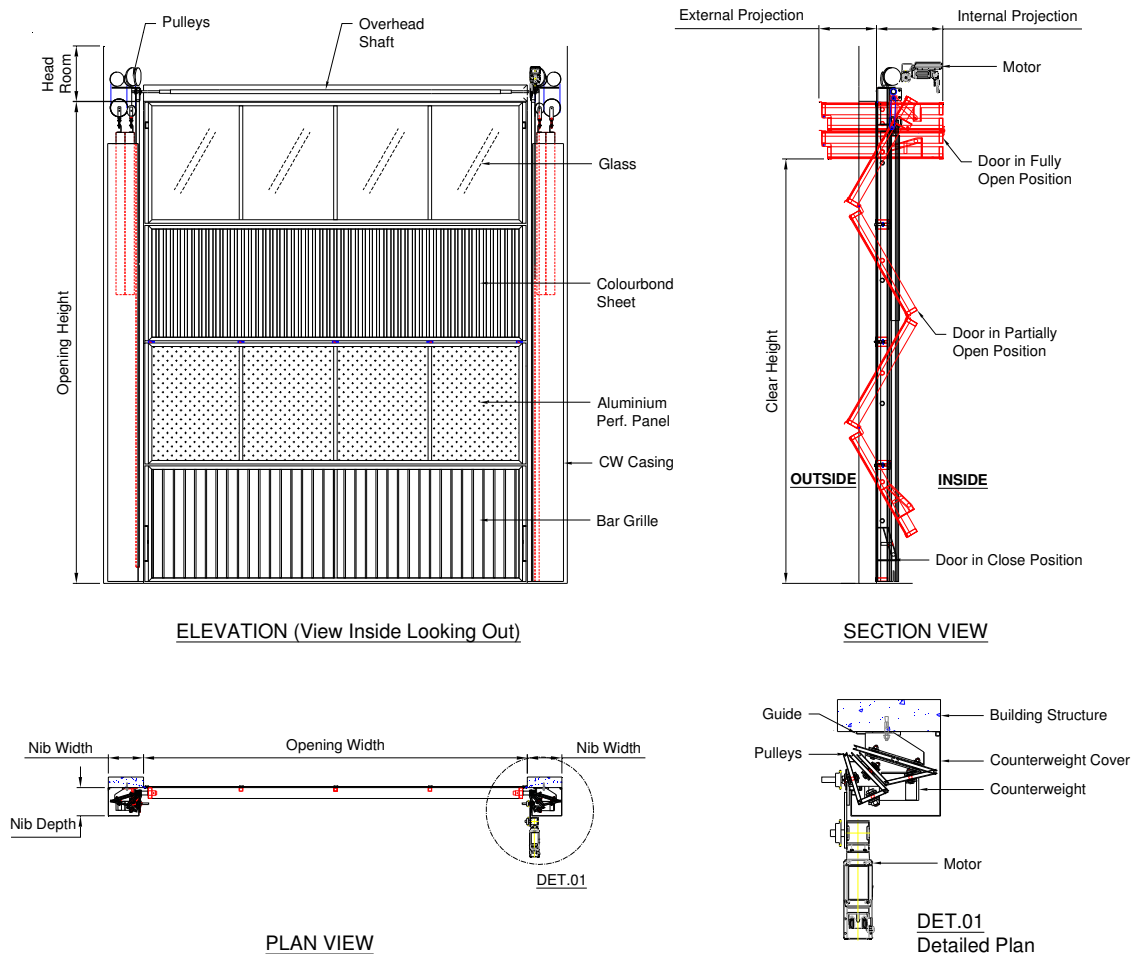
Cladding / Glazing

Being a counterweight balanced door the ARCO (Qld) A4000 can be designed to accept a wide variety of cladding and glazing materials.

The following combinations of glazing and cladding are quite common:

- Sheet products such as Trimdek and Custom Orb.
- Toughened Laminated Glass.
- Polycarbonate, Acrylic, Perspex and Laserlite etc.
- Aluminium Perforation Panel.
- Aluminium Composite Panels (ACP)

A4000 Specification



ARCO (QLD) has a continuous program of product development and reserves the right to change applications as any time without notice

ARCO (QLD) Pty.Ltd. ABN 27 108 275 896

s34 Christensen Road South, Stapylton, QLD 4207 | Tel: 61-7 3807 5364 | Fax: 61-7 3382 7929

Web: www.arcoqld.com.au