

## A2000

Hingeway  
Counterweight  
Balanced Door

### FEATURES

MINIMAL  
INTERNAL  
PROJECTION

HIGH TRAFFIC  
AREAS

CUSTOM BUILT  
FOR ALL  
STRUCTURAL  
REQUIREMENTS  
AND  
ARCHITECTURAL  
DESIGNS

CLADDING  
VERSATILITY

MINIMAL  
MAINTENANCE  
REQUIREMENTS



## A2000 - Hingeway Counterweight Balanced Door

The A2000 Hingeway Counterweight Balanced Door is custom made and designed for all applications where security and superior appearance is required and openings designed to span as little as 1 metre to as much as 10 metres in width if required (for wider openings please refer A3000 Foldaway Counterweight Door) with minimal internal projection and requires little headroom. The main benefits of A2000's Hingeway Counterweight Balanced Door is that it achieves the lowest maintenance with the highest operation cycles, able to be designed in a variety of cladding and glazing types.

The A2000 is commonly used in the industrial, commercial and domestic markets offering an architecturally contemporary appeal which allows natural light in or bringing the outside in.

With ARCO's (Qld) custom made operating mechanism over 100,000 cycles are easily obtained per year, which is by far the lowest maintenance with the highest operational cycles of any conventional door system in Australia.

All ARCO's (Qld) counterweight doors are designed to withstand site specific wind loading in accordance to AS1170.2-2002. If wind loads are not provided, the standard industry 0.5 Kpa is used.

## Our Product Range

Quality in every product



A3000  
Foldaway



A5000  
Vertical Lift



STADIUM  
Roller Grille



ARCADE 2  
Roller Shutter



ARCADE 3  
Roller Grille



MIKADO  
Folding Door



SLIMLINE  
Roller Shutter



CASINO  
Aluminium Roller Grille



CLEAR ROLLER  
Roller Shutter



Q 100  
Steel Roller Shutter



A1000  
Tilt Up Door



A1500  
Fully Recessed Door



A2000  
Hingeway Door

# Features and Benefits

## Recommended Specification

A2000 is custom built for each specific application. Please contact ARCO (Qld) for any technical assistance in design and installation. Listed below are some of the main design considerations when specifying the A2000:

- Operational Requirements.
- Opening Dimensions.
- Structural Requirements.
- Architectural Requirements.

Therefore it is important to accurately measure the opening dimensions and adequately specify any requirements.

## Opening Requirements

The A2000 Hingeway Counterweight Balanced Door requires operational clearances as well as permanent space for its accommodation. These dimensions vary depending on the application. It is important to take these in to consideration especially the operational clearances as they impinge on other design criteria, for example the drive through clearances.

## Motorisation

Motorisation requires the addition of:

- Motorisation Guides.
- Drive Unit, Including Torque Limiter.
- Independent Limit Switches.
- Overhead Shaft.
- Control System.

When a motorised door is ordered the above mentioned items are included as they are integral components of the door. Motorisation may be fitted to an existing manual door however this may require extensive modification.

## Locking

Locking is normally provided on manual operated doors only. Pad bolts are fitted internally to allow the door to be latched in the closed position. These can be fitted with padlocks for additional security.

Locking for motorised doors is usually locked via the motor however additional security is available, for example electric or magnetic locks.

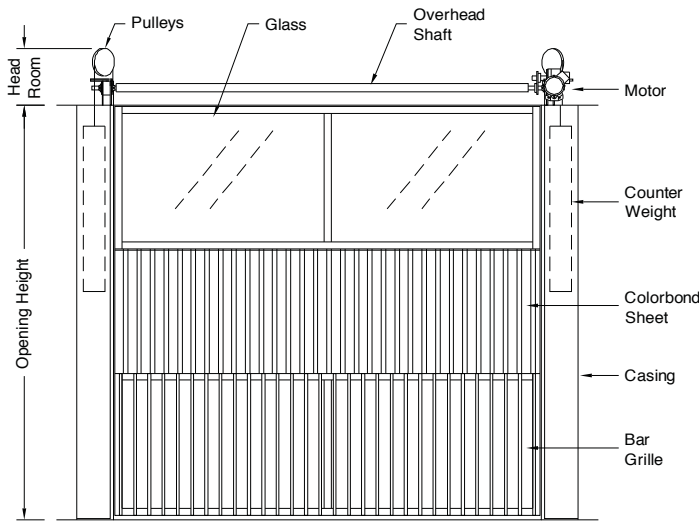
## Cladding / Glazing

Being a counterweight balanced door the ARCO (Qld) A2000 Hingeway Counterweight Balanced Door can be designed to accept a wide variety of cladding and glazing materials.

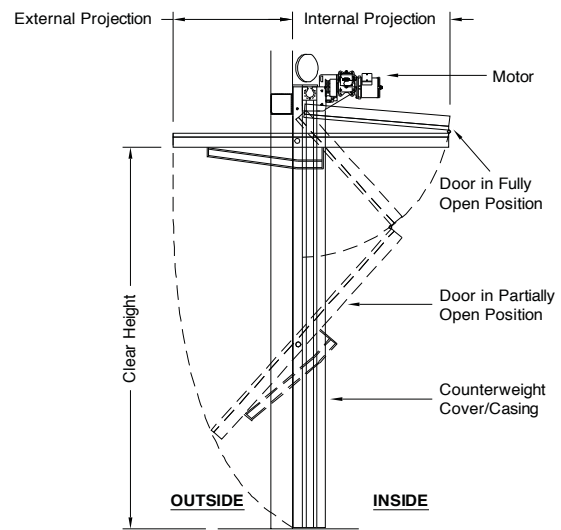
The following combinations of glazing and cladding are quite common:

- Sheeting products such as Trimdek and Custom Orb.
- Toughened Laminated Glass.
- Polycarbonate, Acrylic, Perspex and Laserlite etc.
- Aluminium Composite Panels (ACP).

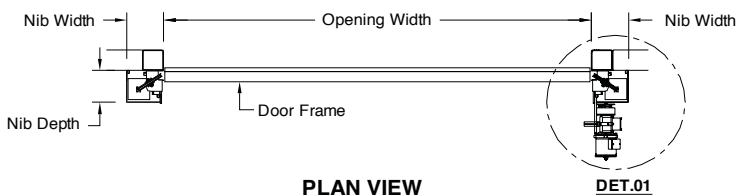
# A2000 Specifications



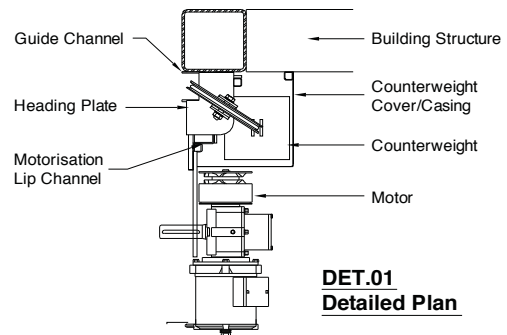
**ELEVATION (View Inside Looking Out)**



**SECTION VIEW**



**PLAN VIEW**



**DET.01 Detailed Plan**

ARCO (QLD) has a continuous program of product development and reserves the right to change specifications at any time without notice.