

A1000

Tilt Up
Counterweight
Balanced Door

FEATURES

HIGH SECURITY

HIGH TRAFFIC
AREAS

CUSTOM BUILT
FOR ALL
STRUCTURAL
REQUIREMENTS
AND
ARCHITECTURAL
DESIGNS

CLADDING
VERSATILITY
SINGLE AND
BI FOLDING
OPENING

MINIMAL
MAINTENANCE
REQUIREMENTS



A1000 - Tilt Up Counterweight Balanced Door

ARCO's (Qld) A1000 is custom made and designed for all applications where security and superior appearance is required and openings designed to span as little as one metre to as much as seven metres in width if required (for wider openings please refer A3000 Foldaway Counterweight Door). The main benefits of A1000's Tilt Up Counterweight Balanced Door is that it achieves the lowest maintenance with the highest operation cycles, able to be designed in a variety of cladding and glazing types and produces low noise emissions where transmission of sound and acoustic levels are of critical importance.

With ARCO's (Qld) custom made operating mechanism over 100,000 cycles are easily obtained per year, which is by far the lowest maintenance with the highest operational cycles of any conventional door system in Australia. All ARCO's (Qld) counterweight doors are designed to withstand site specific wind loading in accordance to AS1170.2-2002. If wind loads are not provided, the standard industry 0.5 Kpa is used.

Our Product Range

Quality in every product



A1000
Tilt Up Door



A1500
Fully Recessed Door



A2000
Hingeway Door



A3000
Foldaway



A5000
Vertical Lift



STADIUM
Roller Grille



ARCADE 2
Roller Shutter



ARCADE 3
Roller Grille



MIKADO
Folding Door



SLIMLINE
Roller Shutter



CASINO
Aluminium Roller Grille



CLEAR ROLLER
Roller Shutter



Q 100
Steel Roller Shutter

Features and Benefits

Recommended Specification

A1000 is custom built for each specific application. Please contact ARCO (Qld) for any technical assistance in design and installation. Listed below are some of the main design considerations when specifying the A1000:

- Operational Requirements.
- Opening Dimensions.
- Structural Requirements.
- Architectural Requirements.

Therefore it is important to accurately measure the opening dimensions and adequately specify any requirements.

Opening Requirements

The A1000 Tilt up Counterweight Balanced Door requires operational clearances as well as permanent space for its accommodation. These dimensions vary depending on the application. It is important to take these in to consideration especially the operational clearances as they impinge on other design criteria, for example the drive through clearances.

Motorisation

Motorisation requires the addition of:

- Motorisation Guides.
- Drive Unit, Including Torque Limiter.
- Independent Limit Switches.
- Overhead Shaft.
- Control System.

When a motorised door is ordered the above mentioned items are included as they are integral components of the door. Motorisation may be fitted to an existing manual door, however this may require extensive modification.

Locking

Locking is normally provided on manual operated doors only. Pad bolts are fitted internally to allow the door to be latched in the closed position. These can be fitted with padlocks for additional security. Locking for motorised doors is usually locked via the motor however additional security is available, for example electric or magnetic locks.

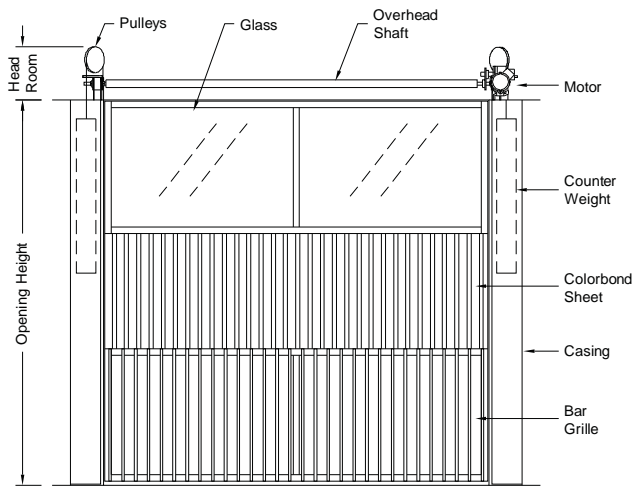
Cladding / Glazing

Being a counterweight balanced door the ARCO (Qld) A1000 Tilt Up Counterweight Balanced Door can be designed to accept a wide variety of cladding and glazing materials.

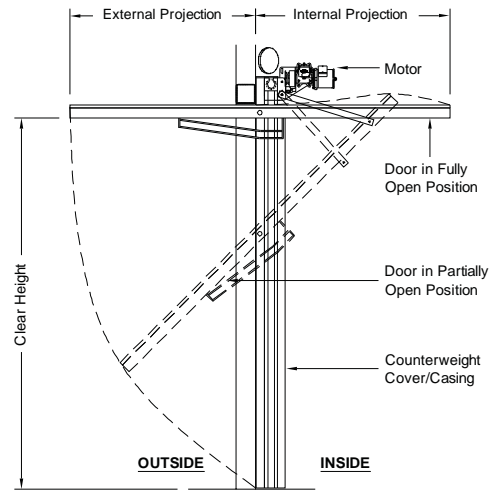
The following combinations of glazing and cladding are quite common:

- Sheetting products such as Trimdek and Custom Orb.
- Toughened Laminated Glass.
- Polycarbonate, Acrylic, Perspex and Laserlite etc.
- Aluminium Composite Panels (ACP).

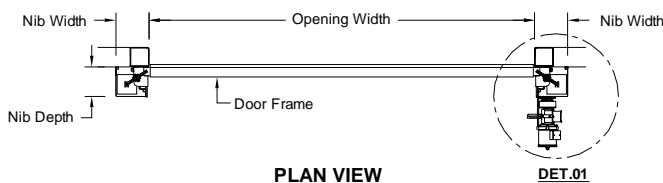
A1000 Specifications



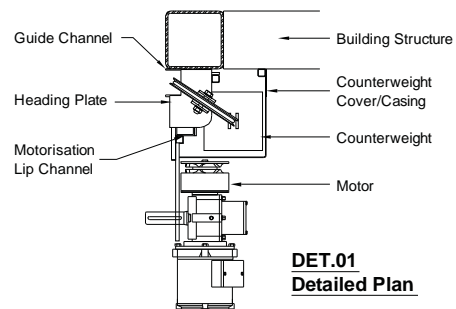
ELEVATION (View Inside Looking Out)



SECTION VIEW



PLAN VIEW



DET.01 Detailed Plan

ARCO (QLD) has a continuous program of product development and reserves the right to change specifications at any time without notice.